



BactoSense® CORE is a cutting-edge flow cytometer, adapted for rapid and automated microbiological analysis in utilities and industrial environments. It is easy to use, and provides results within 20 minutes. Its innovative cartridge system is designed for safety, convenience and sustainability. Get unmatched, real-time data for precise water quality control, enabling superior decision-making and operational efficiency. With BactoSense CORE, detect abnormal changes promptly and keep your water safe.

### Measurement

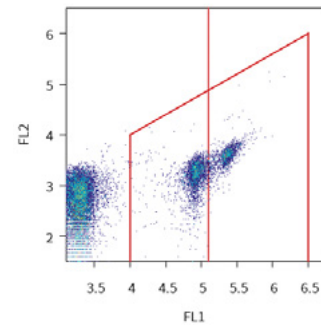
Measuring principle	Flow cytometry
Detection range	0–5,000,000 cells/mL
Quantification range	Total Cells: 1,000–2,000,000 cells/mL Intact Cells: 100–2,000,000 cells/mL Active Cells: 100–2,000,000 cells/mL
Laser type and wavelength	Laser diode 488 nm
Fluorescence	530/50 nm FL1, 715 LP nm FL2
Result parameters	TCC/mL, ICC/mL, ACC/mL, LNAC/mL, HNAC/mL, HNAP (%)
Automatic measuring interval	From every 30 minutes to every 6 hours

### Sampling

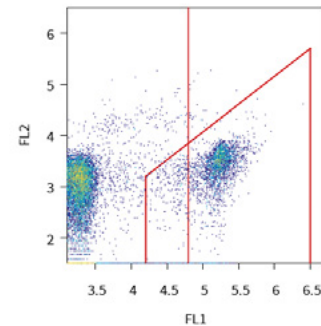
Sampling type	Online or manual
Online sampling device	Flow through device: 200–400 mL/min (0.05–0.10 gal/min) Pressure in device: max. 0.5 bar (7.3 psi) Measured volume: 90 µL
Manual sampling device	Sample container: 5-mL screw-cap tube Sample volume: 2–5 mL Measured volume: 90 µL
Sample conditions	Temperature: 5–40 °C (41–104 °F) Turbidity: 0–10 FTU, 0–10 FNU Conductivity: 0–100,000 µS/cm at 20 °C (68 °F) pH-value: 5–12 Chlorine: max. 3 mg/L Iron: max. 200 µg/L Manganese: max. 50 µg/L

### General

Operating environment	Indoor use
Operating altitude	Max. 2000 m (6,600 feet) above sea level
Operating temperature	5–30 °C (41–86 °F)
Operating humidity	10–90 % RH
Storage temperature	10–30 °C (50–86 °F)
Storage humidity	10–70 % RH
Protection classes	BactoSense: IP65, Power supply: IP67



Dotplots showing TCC



Dotplots showing ICC



Online sampling device



Manual sampling device

## Physical

Dimension (W x D x H)	361 x 270 x 424 mm (14.2 x 10.6 x 16.7")
Weight	14.3 kg with cartridge (31.5 lbs), 11.1 kg without cartridge (24.5 lbs)
Power supply dimension (W x D x H)	230 x 80 x 65 mm (9.0 x 3.1 x 2.6")
Power supply weight	0.9 kg (2.0 lbs)

## Electrical

Power supply	Power supply unit: 100–240 VAC $\pm$ 10 %, 50/60 Hz, 1.4 A BactoSense: 18–24 VDC, 60 W
Power consumption	Average consumption: 20 W, peak consumption: 60 W
Recovery after power interruption	Configurable auto-restart

## Interfaces, connectivity and remote access

USB	2 x USB 3.1, 5 V 1 A per port
Ethernet	1 x RJ45 Gigabit Ethernet
Ethernet protocols	Web interface, Remote desktop (VNC), Modbus TCP (optional), HTTP / HTTPS, FTP
Digital inputs	4 x digital inputs
Analogue and digital outputs	2 x analogue outputs, 4 x digital outputs
Display	WVGA, 7.0" capacitive touchscreen
Mobile connectivity	BactoLink connectivity module (optional)
Advanced data analysis	FCS 3.1 file export
Data storage capacity	128 GB

## Cartridge

Capacity	Up to 1,000 measurements, depending on the cartridge
Validity	Up to 9 months, depending on the cartridge
Storage temperature	15–25 °C (59–77 °F), ideally at 15 °C (59 °F)
Storage humidity	20–60 % RH

## Maintenance

Preventive maintenance	After 3 cartridges, at least yearly
Calibration	Factory calibration only

## Compliance

The product has been tested and fulfills the requirements of all applicable standards of the CENELEC countries, US, Canada and Japan.

## Accessories and Consumables

Cartridge refills, BactoLink mobile connectivity module, IO-Box, Cleaning kit, Validation kit, Transport case, Scientific package, Administration package



BactoLink mobile connectivity module



IO-Box



Cartridge



Cleaning kit

